



## Townhouses with Panoramic Views

From **850.000 €** # DEV-SRHM

🛁 0 Baths

🛏 0 Beds

🏠 0 m<sup>2</sup>

🏠 0 m<sup>2</sup>

📍 None

🕒 Apr 2029

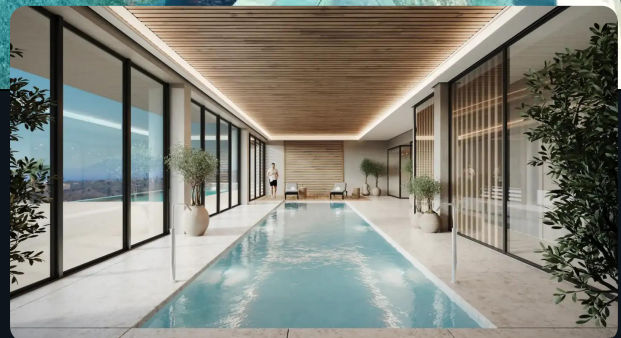
Remember that we have access to all properties on the market!



+420 724 296 929 | +34 665 333 999



lucky@luckysol.eu



[View on website](#)

# Overview

The development consists of 113 four-level townhouses arranged around light, privacy and daily wellbeing. Each townhouse has a private glass-door elevator connecting all floors and offers panoramic sea and mountain views from its elevated position. Layouts feature a master suite with en-suite bathroom, dressing room and private terrace, plus two additional bedrooms with built-in wardrobes that share a modern full bathroom. Delivery is scheduled for the first half of 2029.

# Amenities

Residents have access to a private wellness centre located at the highest point of the site, with a heated semi-Olympic outdoor pool, a heated indoor pool, a fully equipped gym, yoga and pilates studios, sauna, hammam and a hydrotherapy area with ice baths. Outside there are five sports and wellness zones for yoga and calisthenics, an outdoor bar with Balinese beds, landscaped gardens, 24-hour security, controlled access, premium concierge, integrated maintenance and a private electric-vehicle service.

# Specifications

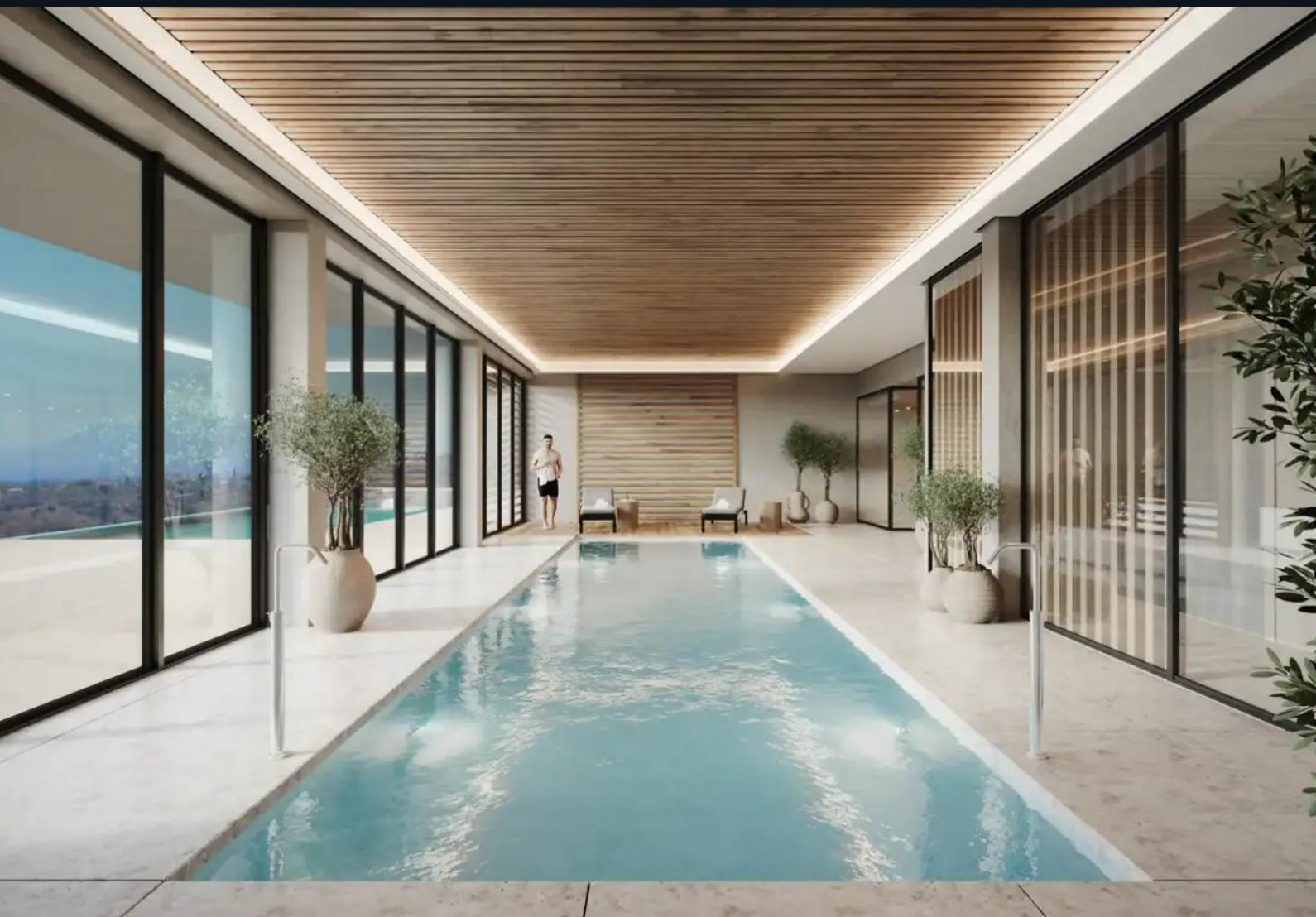
Each townhouse spreads across four levels connected by a private glass-door elevator. Spacious terraces offer the option of a jacuzzi, an outdoor kitchen with barbecue and dedicated dining and lounge areas. The open-plan kitchen comes with Siemens appliances, with the option to choose other brands. Floor-to-ceiling windows open onto the terrace and garden, and a guest toilet completes the layout. Each townhouse includes two private parking spaces, a storage room, a laundry room, direct access and customisation options.

# Location

The townhouses sit in Elviria Sur, an elevated area of Marbella that combines natural surroundings with the energy of the coast. Golf courses are 1 minute away by car, the nearest beach is 5 minutes away and Nikki Beach is 7 minutes (3 km) away. Central Marbella

[Read more](#)

---



# Amenities

 Services

 Features

 Location

## Total Purchase Costs

Get a complete understanding of your property purchase costs. Our breakdown covers the property price and all associated fees.

<input checked="" type="checkbox"/> Property Price	850.000 €
<input checked="" type="checkbox"/> VAT (10%) ⓘ	85.000 €
<input checked="" type="checkbox"/> Stamp Duty (1.2%) ⓘ	10.200 €
<input checked="" type="checkbox"/> Lawyer Fees (1%) ⓘ	8.500 €

[Go to Mortgage Calculator](#)

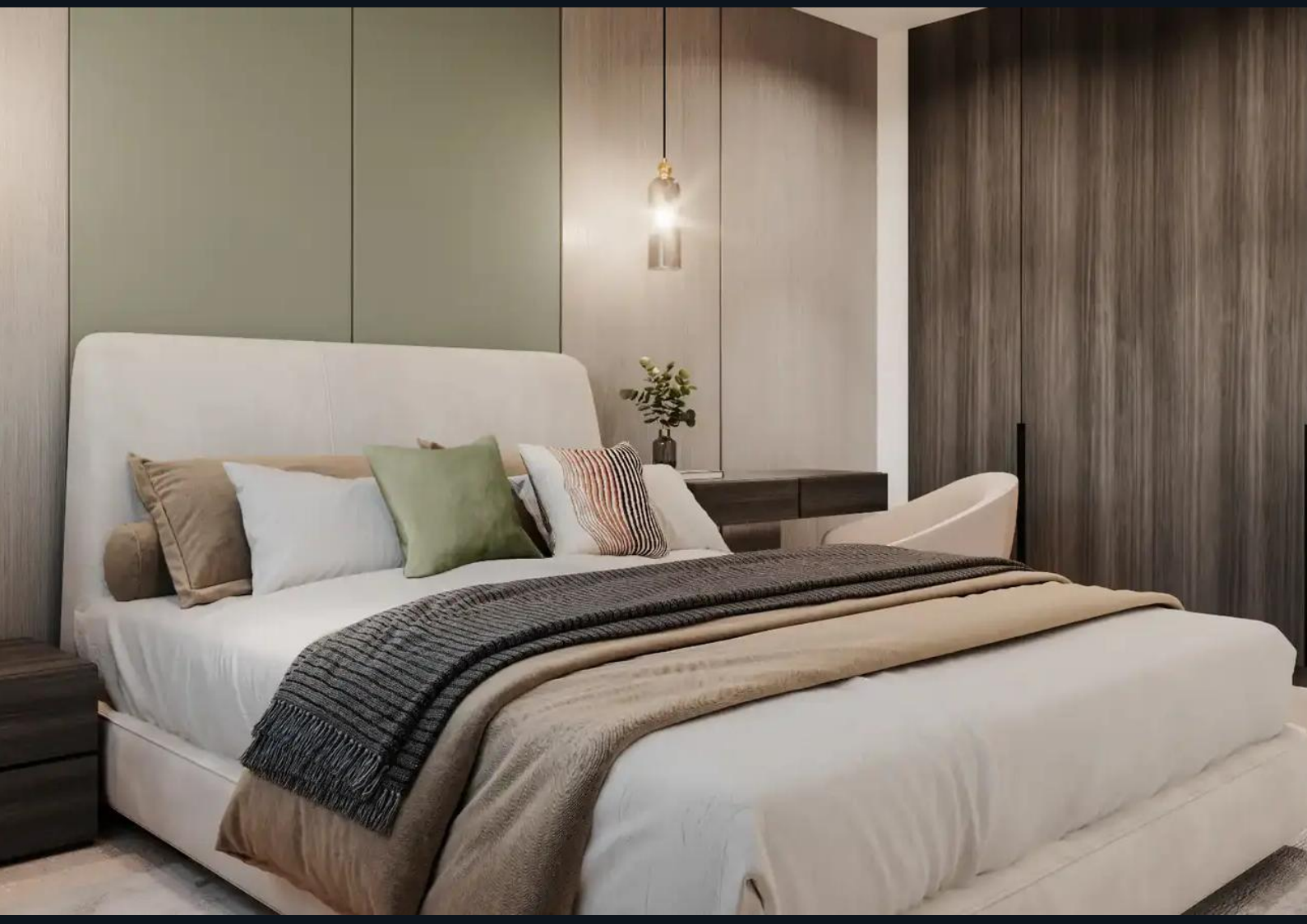
---

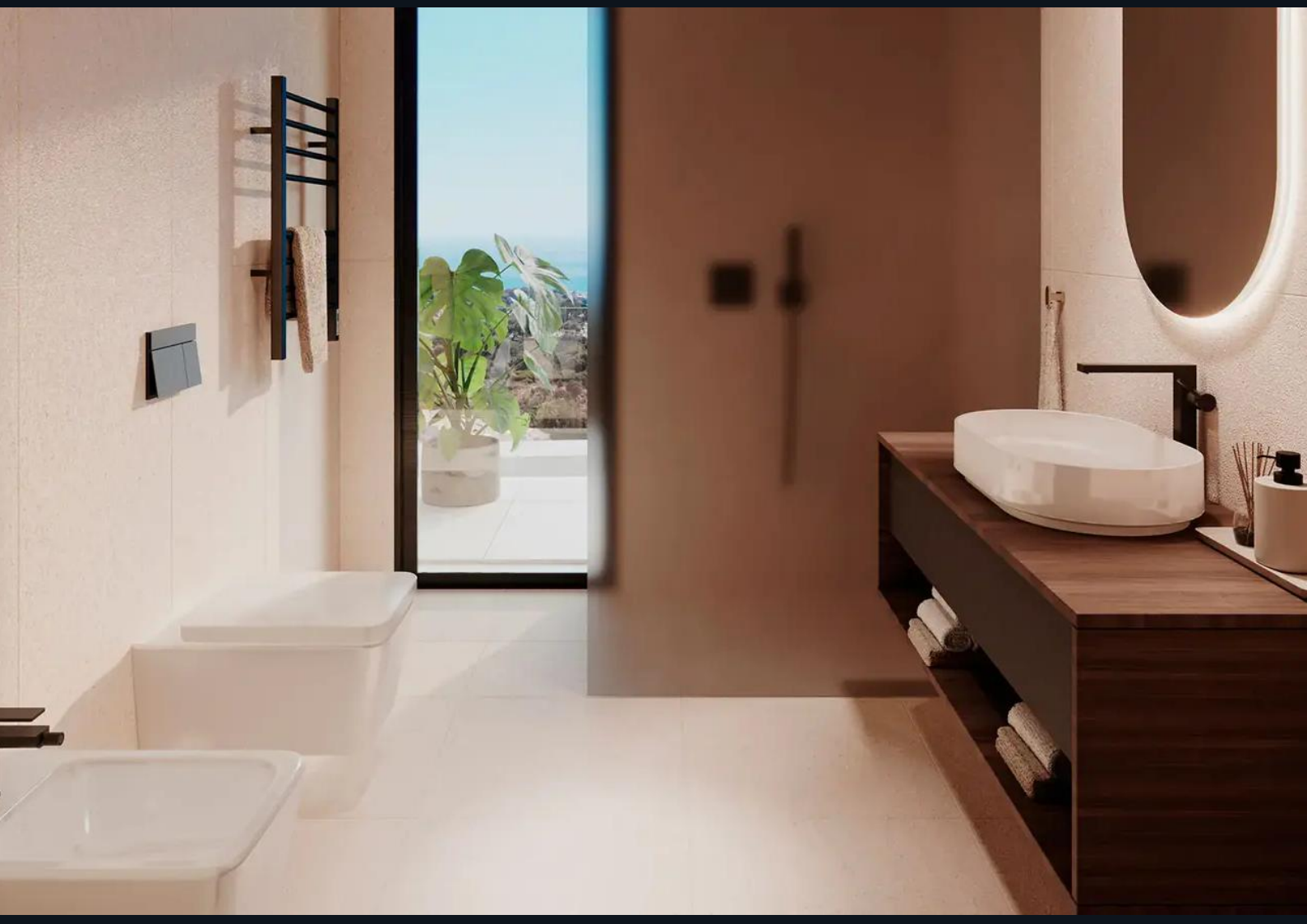


















## Townhouses with Panoramic Views

From 850.000 € # DEV-SRHM

 0 Baths

 0 Beds

 0 m<sup>2</sup>

 0 m<sup>2</sup>

 None

 Apr 2029

Remember that we have access to all properties on the market!



+34 665 333 999



+420 724 296 929



lucky@luckysol.eu

[View on website](#)

[About Us](#)

[Costa del Sol](#)

[Services](#)